

## Prof. EKİN SUCU

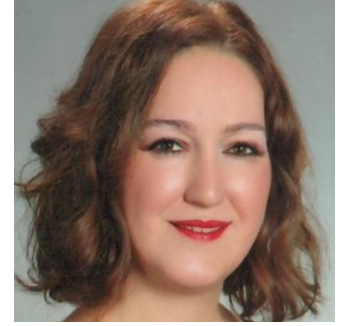


### Personal Information

**Office Phone:** [+90 224 294 1559](tel:+902242941559) Extension: 41559

**Email:** [ekins@uludag.edu.tr](mailto:ekins@uludag.edu.tr)

**Web:** <https://avesis.uludag.edu.tr/ekins>



### International Researcher IDs

ScholarID: [\\_px3mGMAAAAJ](https://orcid.org/_px3mGMAAAAJ)

ORCID: 0000-0003-1470-2751

Publons / Web Of Science ResearcherID: AAG-8331-2021

ScopusID: 14038064900

Yoksis Researcher ID: 156899

### Education Information

Post Doctorate, Iowa State University, College of Agriculture and Life Sciences, Animal Science, United States Of America 2010 - 2012

Doctorate, Bursa Uludağ University, FEN BİLİMLERİ ENSTİTÜSÜ, Zootečni (Dr), Turkey 2004 - 2009

Postgraduate, Bursa Uludağ University, FEN BİLİMLERİ ENSTİTÜSÜ, Zootečni (YI) (Tezli), Turkey 1999 - 2002

Undergraduate, Bursa Uludağ University, ZİRAAT FAKÜLTESİ, Zootečni Bölümü, Turkey 1995 - 1999

### Foreign Languages

English, C2 Mastery

### Dissertations

Doctorate, Laktik asit bakterii inokulantlarının mısır silajının fermentasyon ve aerobik stabilite özellikleri ile rumen ekolojisi üzerine etkileri, Bursa Uludağ University, FEN BİLİMLERİ ENSTİTÜSÜ, 2009

Postgraduate, Mısır ve buğday silajlarında bakteriyel inokulant kullanımının silaj fermentasyonu, aerobik stabilite ve rumen parçalanabilirliği üzerine etkileri, Bursa Uludağ University, FEN BİLİMLERİ ENSTİTÜSÜ, 1999

### Research Areas

Agricultural Sciences, Agriculture, Zootečni and Animal Nutrition

### Academic Titles / Tasks

Professor, Bursa Uludağ University, ZİRAAT FAKÜLTESİ, ZOOTEKNİ, 2023 - Continues

Associate Professor, Bursa Uludağ University, ZİRAAT FAKÜLTESİ, ZOOTEKNİ, 2018 - 2023

Assistant Professor, Bursa Uludağ University, ZİRAAT FAKÜLTESİ, ZOOTEKNİ, 2013 - 2018

Research Assistant, Bursa Uludağ University, ZİRAAT FAKÜLTESİ, ZOOTEKNİ, 1999 - 2013

Researcher, Iowa State University, College of Agriculture and Life Sciences, Department of Animal Science, 2010 - 2012

## Academic and Administrative Experience

Bursa Uludağ University, ZİRAAT FAKÜLTESİ, Zootekni Bölümü, 2013 - Continues

Bursa Uludağ University, ZİRAAT FAKÜLTESİ, Zootekni Bölümü, 2013 - Continues

Deputy Head of Department, Bursa Uludağ University, ZİRAAT FAKÜLTESİ, ZOOTEKNİ, 2019 - 2020

## Courses

Nutritional and Environmental Physiology in Ruminants , Postgraduate, 2021 - 2022

Professional foreign language , Undergraduate, 2021 - 2022

LABORATORY METHODS IN ANIMAL NUTRITION, Postgraduate, 2020 - 2021

NUTRITIONAL DISORDERS in RUMINANTS, Undergraduate, 2020 - 2021

Organik Yemler ve Hayvan Besleme, Associate Degree, 2016 - 2017

## Advising Theses

Sucu E., The effects of hazelnut hull on silage fermentation, aerobic stability and in vitro gas production of maize silage grown as a second crop, Postgraduate, A.Okumuş(Student), 2021

SUCU E., The effects of protected methionine and lysine on milk yield and milk composition in holstein dairy cows, Postgraduate, E.Gülgün(Student), 2020

## Published journal articles indexed by SCI, SSCI, and AHCI

- I. **The impact of adding hops to alfalfa at different rates on silage quality and methane emissions in vitro**  
Gülümser E., Mut H., Sucu E., Başaran U., Çopur Doğrusöz M.  
TURKISH JOURNAL OF AGRICULTURE AND FORESTRY, vol.48, no.1, pp.71-80, 2024 (SCI-Expanded)
- II. **In Vitro Studies on Rumen Fermentation and Methanogenesis of Different Microalgae and Their Effects on Acidosis in Dairy Cows**  
Sucu E.  
Fermentation, vol.9, no.229, pp.1-10, 2023 (SCI-Expanded)
- III. **The Effects of Hazelnut Husk Supplementation on Silage Quality, Deterioration, and In Vitro Digestion Parameters in Second Crop Maize.**  
Okumuş A., Sucu E.  
TARIM BİLİMLERİ DERGİSİ, vol.29, no.3, pp.821-832, 2023 (SCI-Expanded)
- IV. **Effects of Algae Derived pure  $\beta$ -Glucan on In Vitro Rumen Fermentation**  
Sucu E., Sonat F.  
ANKARA UNIVERSİTESİ VETERİNER FAKÜLTESİ DERGİSİ, vol.70, no.4, pp.447-452, 2023 (SCI-Expanded)
- V. **Effects of rumen-protected methionine and lysine on milk yield and milk composition in Holstein dairy cows consuming a corn grain and canola meal-based diet**  
Gulgun E., Sucu E.  
TURKISH JOURNAL OF VETERINARY & ANIMAL SCIENCES, vol.46, no.3, pp.367-375, 2022 (SCI-Expanded)
- VI. **EFFECTS OF MICROALGAE SPECIES ON IN VITRO RUMEN FERMENTATION PATTERN AND METHANE**

## PRODUCTION

Sucu E.

ANNALS OF ANIMAL SCIENCE, vol.20, no.1, pp.207-218, 2020 (SCI-Expanded)

- VII. **Determination of in vitro rumen digestibility and potential feed value of tiger nut varieties**  
Ayasan T, Sucu E, Ülger İ, Hizli H, Cubukcu P, Özcan B. D.  
SOUTH AFRICAN JOURNAL OF ANIMAL SCIENCE, vol.50, no.5, pp.738-744, 2020 (SCI-Expanded)
- VIII. **Effects of feeding Aspergillus oryzae fermentation product to transition Holstein cows on performance and health**  
Sucu E, Moore C, Vanbaale M. J, Jensen H, Sanz-Fernandez M., Baumgard L. H.  
CANADIAN JOURNAL OF ANIMAL SCIENCE, vol.99, no.2, pp.237-243, 2019 (SCI-Expanded)
- IX. **Effects of stoned olive pomace on carcass characteristics and meat quality of lambs**  
Sucu E, Akbay K. C., Şengül Ö., Yavuz M. T., Ibrahim A. K.  
TURKISH JOURNAL OF VETERINARY & ANIMAL SCIENCES, vol.42, no.6, pp.533-542, 2018 (SCI-Expanded)
- X. **Influence of supplementing diet with microalgae (Schizochytrium limacinum) on growth and metabolism in lambs during the summer**  
SUCU E., UDUM D., GÜNEŞ N., CANBOLAT Ö., FİLYA İ.  
TURKISH JOURNAL OF VETERINARY & ANIMAL SCIENCES, vol.41, no.2, pp.167-174, 2017 (SCI-Expanded)
- XI. **Effects of ensiling density on nutritive value of maize and sorghum silages**  
SUCU E., Kalkan H., CANBOLAT Ö., FİLYA İ.  
REVISTA BRASILEIRA DE ZOOTECNIA-BRAZILIAN JOURNAL OF ANIMAL SCIENCE, vol.45, no.10, pp.596-603, 2016 (SCI-Expanded)
- XII. **Effects of lines and inoculants on nutritive value and production costs of triticale silages**  
Sucu E., Aydoğan Çifci E.  
REVISTA BRASILEIRA DE ZOOTECNIA-BRAZILIAN JOURNAL OF ANIMAL SCIENCE, vol.45, no.7, pp.355-364, 2016 (SCI-Expanded)
- XIII. **Effect of the ratio of zinc amino acid complex to zinc sulfate on the performance of Holstein cows**  
Nayeri A., Upah N. C., Sucu E., Sanz-Fernandez M. V., Defrain J. M., Gorden P. J., Baumgard L. H.  
JOURNAL OF DAIRY SCIENCE, vol.97, no.7, pp.4392-4404, 2014 (SCI-Expanded)
- XIV. **The effects of supplemental protease enzymes on production variables in lactating Holstein cows**  
Sucu E., Nayeri A., Sanz-Fernandez M. V., Upah N. C., Baumgard L. H.  
ITALIAN JOURNAL OF ANIMAL SCIENCE, vol.13, no.2, 2014 (SCI-Expanded)
- XV. **The effects of lactic acid bacteria on the fermentation, aerobic stability and nutritive value of maize silage**  
Filya İ., Sucu E.  
GRASS AND FORAGE SCIENCE, vol.65, no.4, pp.446-455, 2010 (SCI-Expanded)
- XVI. **Effect of a chemical preservative on fermentation, aerobic stability and nutritive value of whole-crop wheat silage**  
FİLYA İ., SUCU E.  
JOURNAL OF APPLIED ANIMAL RESEARCH, vol.32, no.2, pp.133-138, 2007 (SCI-Expanded)
- XVII. **Comparison of in vitro gas production, metabolizable energy, organic matter digestibility and microbial protein production of some legume hays**  
Karabulut A., Canbolat Ö., Kalkan H., Gurbuzol F., Sucu E., Filya İ.  
ASIAN-AUSTRALASIAN JOURNAL OF ANIMAL SCIENCES, vol.20, no.4, pp.517-522, 2007 (SCI-Expanded)
- XVIII. **The effect of bacterial inoculants and a chemical preservative on the fermentation and aerobic stability of whole-crop cereal silages**  
Filya İ., Sucu E.  
ASIAN-AUSTRALASIAN JOURNAL OF ANIMAL SCIENCES, vol.20, no.3, pp.378-384, 2007 (SCI-Expanded)
- XIX. **The effect of Lactobacillus buchneri on the fermentation, aerobic stability and ruminal degradability of maize silage**  
Filya İ., Sucu E., Karabulut A.  
JOURNAL OF APPLIED MICROBIOLOGY, vol.101, no.6, pp.1216-1223, 2006 (SCI-Expanded)

- XX. **The effects of *Propionibacterium acidipropionici* and *Lactobacillus plantarum*, applied at ensiling, on the fermentation and aerobic stability of low dry matter corn and sorghum silages**  
Filya İ., Sucu E., Karabulut A.  
JOURNAL OF INDUSTRIAL MICROBIOLOGY & BIOTECHNOLOGY, vol.33, no.5, pp.353-358, 2006 (SCI-Expanded)
- XXI. **The effects of bacterial inoculants on the fermentation, aerobic stability and rumen degradability characteristics of wheat silages**  
Sucu E., Filya İ.  
TURKISH JOURNAL OF VETERINARY & ANIMAL SCIENCES, vol.30, no.2, pp.187-193, 2006 (SCI-Expanded)
- XXII. **Effects of homofermentative lactic acid bacterial inoculants on the fermentation and aerobic stability characteristics of low dry matter corn silages**  
Sucu E., Filya İ.  
TURKISH JOURNAL OF VETERINARY & ANIMAL SCIENCES, vol.30, no.1, pp.83-88, 2006 (SCI-Expanded)
- XXIII. **The effect of *Propionibacterium acidipropionici*, with or without *Lactobacillus plantarum*, on the fermentation and aerobic stability of wheat, sorghum and maize silages**  
Filya İ., Sucu E., Karabulut A.  
JOURNAL OF APPLIED MICROBIOLOGY, vol.97, no.4, pp.818-826, 2004 (SCI-Expanded)

### Articles Published in Other Journals

- I. **Determination of Nutritional Values of Different Tiger nut (*Cyperus esculentus*) Types by Using In Vitro Gas Production Technique**  
Ayaşan T., Sucu E., Ülger İ., İnci H., Hızlı H., İnan S.  
Journal of the Institute of Science and Technology, vol.11, no.2, pp.1653-1663, 2021 (Peer-Reviewed Journal)
- II. **Effects of Whole Corn Grain Supplementation on Intake and Growth in Holstein Calves**  
SUCU E., Gulgun E., Okumus A.  
JOURNAL OF TEKIRDAG AGRICULTURE FACULTY-TEKIRDAG ZIRAAT FAKULTESİ DERGİSİ, vol.16, no.3, pp.382-388, 2019 (ESCI)
- III. **Hygienic profile and nutritive value of boot stage wheat silage treated with acid based preservative**  
SUCU E., FİLYA İ.  
Gaziosmanpaşa Üniversitesi Ziraat Fakültesi Dergisi, vol.33, no.3, pp.1-9, 2016 (Peer-Reviewed Journal)
- IV. **Effects of Heat Stress on Metabolism in Ruminants**  
Sucu E., Akbay K. C., Filya İ.  
Atatürk Üniversitesi Veteriner Bilimleri Dergisi, vol.10, no.2, pp.130-138, 2015 (Peer-Reviewed Journal)
- V. **The effect of a formic acid based preservative on structural carbohydrates and nutritive value of low dry matter sweet sorghum silages**  
SUCU E., FİLYA İ., TURGUT İ.  
Macedonian Journal of Animal Science, vol.1, no.1, pp.129-134, 2011 (Peer-Reviewed Journal)
- VI. **The effect of a formic acid-based preservative on structural carbohydrates and nutritive value of low dry matter sweet sorghum silages**  
SUCU E., FİLYA İ., TURGUT İ.  
Macedonian Journal of Animal Science, no.1, pp.129-134, 2009 (Peer-Reviewed Journal)
- VII. **The effect of silage-based rations on feed efficiency levels of dairy cows.**  
Filya İ., Kalkan H., Sucu E.  
Yem Magazin Dergisi, no.53, pp.21-26, 2008 (Peer-Reviewed Journal)
- VIII. **Researches on Feed Value and Using Possibilities in Lamb Fattening of Dried Olive-cake 2. Effects on fattening performance of lambs**  
Filya İ., Hanoğlu H., Canbolat Ö., Sucu E.  
Uludağ Üniversitesi Ziraat Fakültesi Dergisi, vol.20, no.1, pp.13-23, 2006 (Peer-Reviewed Journal)
- IX. **Researches on Feed Value and Using Possibilities in Lamb Fattening of Dried Olive-cake 1. Determination of feed value by in situ method**

- Filya İ., Hanoğlu H., Canbolat Ö., Sucu E.  
Uludag Üniversitesi Ziraat Fakültesi Dergisi, vol.20, no.1, pp.1-12, 2006 (Peer-Reviewed Journal)
- X. **1. The effect of formic acid-based preservative on the fermentation, microbial flora, aerobic stability and in situ rumen degradability characteristics of maize silage in laboratory conditions**  
Filya İ., Sucu E.  
JOURNAL OF AGRICULTURAL SCIENCES-TARIM BİLİMLERİ DERGİSİ, vol.11, no.1, pp.51-56, 2005 (Peer-Reviewed Journal)
- XI. **Mısır silajına katılan ürenin silaj fermantasyonu aerobik stabilite ve kuzuların besi performansı üzerine etkileri II Ulusal Hayvan Besleme Kongresinde sözlü olarak sunulmuştur**  
FİLYA İ., SUCU E., HANOĞLU H.  
Tarım Bilimleri Dergisi-Journal Of Agricultural Sciences, vol.10, no.3, pp.258-262, 2004 (Peer-Reviewed Journal)
- XII. **Researches on Using Organic Acids in the Silage Fermentation 2. The effect of formic acid-based preservative on the fermentation, microbial flora, aerobic stability and in situ rumen degradability characteristics of maize silages in farm conditions**  
Filya İ., Sucu E., Canbolat Ö.  
Uludag Üniversitesi Ziraat Fakültesi Dergisi, vol.18, no.2, pp.35-45, 2004 (Peer-Reviewed Journal)
- XIII. **A Research on the Quality Characteristics and Nutritive Value of Small Plastic Bale Maize Silages Ensiled with Biological Silage Additives and their Use in Lamb Fattening**  
Filya İ., Sucu E., Hanoğlu H.  
Tarım Bilimleri Dergisi-Journal Of Agricultural Sciences, vol.10, no.2, pp.158-162, 2004 (Peer-Reviewed Journal)
- XIV. **Investigations on Using Protected Protein in Ruminants Nutrition 1. The in Situ Rumen Degradability Characteristics of Protected Proteins**  
Filya İ., Sucu E., Hanoğlu H., Karabulut A.  
Tarım Bilimleri Dergisi-Journal Of Agricultural Sciences, vol.9, no.2, pp.162-169, 2003 (Peer-Reviewed Journal)
- XV. **Investigations on Using Protected Protein in Ruminants Nutrition 2. Effects of Protected Proteins Using During the Last Period of Gestation on Liveweight of Ewes and the Growth and Survival Rates of Their Lambs.**  
Filya İ., Hanoğlu H., Sucu E., Karabulut A., Şengül L.  
Tarım Bilimleri Dergisi-Journal Of Agricultural Sciences, vol.9, no.1, pp.98-102, 2003 (Peer-Reviewed Journal)
- XVI. **Bakteriyal inokulantların sorgum silajlarının fermantasyon aerobik stabilite ve rumen parçalanabilirlik özellikleri üzerine etkileri**  
FİLYA İ., KARABULUT A., KALKAN H., SUCU E.  
Tarım Bilimleri Dergisi-Journal Of Agricultural Sciences, vol.7, no.2, pp.112-119, 2001 (Peer-Reviewed Journal)

## **Refereed Congress / Symposium Publications in Proceedings**

- I. **Implementation of Peganum harmala and Trigonella foenum graceum in animal production**  
Akram M. Z., Jalal H., CANOĞULLARI DOĞAN S., Abid M. M., Fusaro I., Shahid S., SUCU E.  
V. International Turkic World Congress on Science and Engineering, Bishkek, Kyrgyzstan, 15 - 17 September 2023
- II. **Factors Affecting Milk Composition in Dairy Cows**  
Sucu E.  
III International and XII National Animal Science Conference, Bursa, Turkey, 27 - 28 November 2021, pp.219-225
- III. **In Vitro Rumen Fermentation Characteristics and Methane Production of Some Microalgae Species and Protein Feeds Commonly Used in Ruminant Diets**  
SUCU E.  
BIALIC CONGRESS INTERNATIONAL BIOLOGICAL, AGRICULTURAL LIFE SCIENCE CONGRESS, Liviv, Ukraine, 6 - 08 November 2019
- IV. **Effects of mycotoxins in ensiled products on animal performance and health**  
Sucu E., Okumuş A., Gülgün E.  
2. International Eurasian Conference on Biological and Chemical Sciences, Ankara, Turkey, 28 - 29 June 2019, pp.1

- V. **Effects of Heat Stress in Animal Production**  
SUCU E.  
International Conference on Agricultural Science and Business – ICASAB 2018, Bulgaria, 10 - 12 May 2018, pp.1-200
- VI. **Effects of Temperature Humidity Index on Dairy Cow Performance**  
SUCU E., Baumgard L.  
International 8TH Balkan Animal Science Conference BALNIMALCON 2017, Prizren, Serbia, 6 - 10 September 2017
- VII. **The comparison of silage quality characteristics and in situ rumen degradability of different grain silages**  
AK İ., AKBAY K. C., SUCU E., ŞENGÜL Ö.  
1st International Animal Nutrition Congress, Antalya, Turkey, 28 September - 01 October 2016
- VIII. **Seedless dry olive pulp obtained from the different production systems in feed use as animal feed facilities to determine the effects on the quality of meat and milk yield**  
AK İ., SUCU E., DOKUZLU S., YAVUZ M. T., AKBAY K. C., ŞENGÜL Ö.  
1st International Animal Nutrition Congress, Antalya, Turkey, 28 September - 01 October 2016
- IX. **How the climatic change affect animal production and the impact of dairy animals on environment**  
SALAMA A. A., SUCU E., CAJA G.  
27th International Scientific-Expert Congress of Agriculture and Food Industry, Bursa, Turkey, 26 - 28 September 2016
- X. **Determining the effectiveness of proteases on production variables in lactating Holstein cows**  
SUCU E., NAYERI A., SANZFERNANDEZ M. V., UPAH N., PEARCE S., BAUMGARD L. H.  
Joint Annual Meeting of ADSA – AMPA – ASAS – CSAS – WSASAS, Denver, United States Of America, 10 - 14 July 2011, pp.873
- XI. **Influence of supplementing lamb with dried algae yeast product on growth and blood metabolites during summer**  
SUCU E., UDUM KÜÇÜKŞEN D., GÜNEŞ N.  
Joint Annual Meeting of ADSA-AMPA-ASAS-CSAS-WSASAS, Florida, United States Of America, 12 - 16 July 2015, pp.491
- XII. **Management of by products in olive oil industry Waste to feed**  
SUCU E., AKBAY K. C., YAVUZ M. T., AK İ.  
Environmentally friendly agriculture and forestry for future generations, XXXVI CIOSTA CIGR V Conference, Saint Peter, Guernsey And Alderney, 25 - 28 May 2015, pp.320
- XIII. **Nutritional adjustments to minimize the effects of heat stress in dairy cows**  
SUCU E., BAUMGARD L. H., FİLYA İ.  
25th International Scientific-Expert Congress on Agriculture and Food Industry, ÇEŞME-İZMİR, Turkey, 25 - 27 September 2014, pp.77-80
- XIV. **Ruminantlarda sıcaklık stresinin biyolojik mekanizması 1 Verim ve besin maddeleri metabolizmasına etkileri**  
SUCU E., AKBAY K. C., FİLYA İ.  
Uluslararası Katılımlı Süt Sığırcılığı Sempozyumu, Kayseri, Turkey, 24 - 25 April 2014, pp.15
- XV. **Zeytinyağı sanayi yan ürünlerinin çiftlik hayvanlarının beslenmesinde kullanımı**  
SUCU E., AKBAY K. C., YENDİM M. T., AK İ.  
Uluslararası Katılımlı Süt Sığırcılığı Sempozyumu, Kayseri, Turkey, 24 - 25 April 2014, pp.53
- XVI. **In vitro evaluation of digestibility and volatile fatty acid production of maize silage supplemented with inoculants Adayın Doktora Tezinden Üretilmiştir**  
SUCU E., FİLYA İ.  
24th International Scientific-Expert Conference of Agriculture and Food Industry, Saraybosna, Bosnia And Herzegovina, 25 - 28 September 2013, pp.77-82
- XVII. **The influence of lactic acid bacteria on fermentation hygienic and nutritive quality of silages**  
FİLYA İ., SUCU E.  
24th International Scientific-Expert Conference on Agriculture and Food Industry, Saraybosna, Bosnia And

Herzegovina, 25 - 28 September 2013, pp.42

- XVIII. **Determining the optimal level of zinc amino acid complex in lactating dairy cows**  
NAYARI A., UPAH N., SUCU E., SANZFERNANDEZ M. V., DEFRAIN J., BAUMGARD L. H.  
Joint Annual Meeting ADSA-AMPA-ASAS-CSAS-WSASAS, Indiana, United States Of America, 8 - 12 July 2013, pp.696
- XIX. **Effects of mild heat stress on growth and carcass characteristics in broiler chickens**  
SUCU E., SANZFERNANDEZ M. V., PEARCE S., NAYERI A., MURUGESAN R., RHOADS R., PERSIA M., BAUMGARD L. H.  
Joint Annual Meeting of ADSA-AMPA-ASAS-CSAS-WSASAS, Arizona, United States Of America, 15 - 19 July 2012, pp.668
- XX. **Characterizing the temporal and seasonal pattern of plasma lipopolysaccharide binding protein during the transition period**  
NAYERI A., UPAH N., SANZ FERNANDEZ M. V., SUCU E., DEFRAIN J., GABLER A., BODDICKER R., SNIDER D. B., BAUMGARD L. H.  
Joint Annual Meeting of ADSA - AMPA - ASAS - CSAS - WSASAS, Arizona, United States Of America, 15 - 19 July 2012, pp.666
- XXI. **Prolactin's role during acute and chronic heat stress in growing pigs**  
Sanz-Fernandez M. V., Pearce S. C., Upah N. C., Long L. R., Nayeri A., Sucu E., Gabler N. K., Patience J. F., Hsu W. H., Rhoads R. P., et al.  
Experimental Biology Meeting, California, United States Of America, 21 - 25 April 2012, vol.26
- XXII. **Potential nutritional strategies to mitigate the negative effects of heat stress**  
NAYERI A., UPAH N., SUCU E., PEARCE S., FERNANDEZ M. V., RHOADS R., BAUMGARD L. H.  
Four-State Dairy Nutrition and Management Conference, Iowa, United States Of America, 8 - 09 June 2011, pp.128-133
- XXIII. **Review of nutrient partitioning**  
BAUMGARD L. H., SUCU E., PEARCE S., UPAH N., NAYERI A., SANZ FERNANDEZ M. V., RHOADS R.  
45th Annual Pacific Northwest Animal Nutrition Conference, Vancouver, Canada, 5 - 07 October 2010, pp.73-81
- XXIV. **Using lactic acid bacteria for improving aerobic stability of silages**  
SUCU E., FİLYA İ.  
17th International Conference KRMIVA 2010, Opatija Hrvatska, Croatia, 7 - 09 June 2010, pp.71
- XXV. **Pirininin yem değeri ve kuzu besisinde kullanılma olanakları**  
Filya İ., Hanoğlu H., Canbolat Ö., Sucu E.  
5. Ulusal Zootekni Bilim Kongresi, Van, Turkey, 5 - 08 September 2007, pp.73
- XXVI. **Bazı biyolojik ve kimyasal katkı maddelerinin mısır sorgum ve buğday silajlarının fermantasyon mikrobiyal flora ve aerobik stabilite özellikleri üzerine etkileri**  
FİLYA İ., SUCU E.  
IV Ulusal Hayvan Besleme Kongresi, Bursa, Turkey, 25 - 28 June 2007, pp.116-120
- XXVII. **Propiyonik asit bakterilerinin mısır silajlarının mikrobiyal flora ve aerobik stabilite üzerine etkileri**  
FİLYA İ., SUCU E., KARABULUT A.  
III. Ulusal Hayvan Besleme Kongresi, Adana, Turkey, 7 - 10 October 2005, pp.500-504
- XXVIII. **Formik asidin düşük kuru maddeli mısır silajlarının aerobik stabilite ve besleme değeri üzerine etkileri**  
FİLYA İ., SUCU E.  
III. Ulusal Hayvan Besleme Kongresi, Adana, Turkey, 7 - 10 October 2005, pp.111-113
- XXIX. **Silaj yapımında ve süt ineklerinin beslenmesinde organik asit kullanımı üzerinde araştırmalar 2 Mısır silajlarına katılan formik asit temeline dayalı bir koruyucunun süt ineklerinin performansları üzerine etkileri**  
FİLYA İ., DEĞİRMENCİOĞLU T., CANBOLAT Ö., SUCU E.  
GAP IV. Tarım Kongresi, Şanlıurfa, Turkey, 21 - 25 September 2005, pp.1723-1726
- XXX. **Silaj yapımında ve süt ineklerinin beslenmesinde organik asit kullanımı üzerinde araştırmalar 1 Formik asit temeline dayalı bir koruyucunun mısır silajlarının kalite özellikleri üzerine etkisi**  
FİLYA İ., SUCU E., CANBOLAT Ö.

GAP IV. Tarım Kongresi, Şanlıurfa, Turkey, 21 - 23 September 2005, pp.1719-1722

- XXXI. **Improving the aerobic stability of whole crop cereal silages**  
FİLYA İ., SUCU E., KARABULUT A.  
The XIVth International Silage Conference, a satellite workshop of the XXth International Grassland Congress, Belfast, United Kingdom, 3 - 06 July 2005, pp.221
- XXXII. **Aerobic stability and nutritive value of low dry matter maize silage treated with formic acid based preservative**  
FİLYA İ., SUCU E., KARABULUT A.  
The XIVth International Silage Conference, a satellite workshop of the XXth International Grassland Congress, Belfast, United Kingdom, 3 - 06 July 2005, pp.222
- XXXIII. **Formik asit temeline dayalı bir koruyucunun mısır ve sorgum silajlarının aerobik stabiliteleri üzerine etkisi**  
FİLYA İ., SUCU E.  
4. Ulusal Zootekni Bilim Kongresi, Isparta, Turkey, 1 - 03 September 2004, pp.424-428
- XXXIV. **Bakteriyal inokulantların mısır silajları üzerine etkileri**  
FİLYA İ., SUCU E., TURGUT İ., KARABULUT A.  
III. Ulusal Zootekni Bilim Kongresi, Ankara, Turkey, 14 - 16 October 2002, pp.280-291
- XXXV. **Silajlarda fermentasyon kalitesi ve aerobik stabilitenin geliştirilmesi üzerinde araştırmalar**  
FİLYA İ., SUCU E.  
GAP III. Tarım Kongresi, Şanlıurfa, Turkey, 2 - 03 October 2003, pp.273-278
- XXXVI. **Ürenin silaj fermentasyonu ve ruminantların performansları üzerindeki etkileri**  
FİLYA İ., SUCU E., HANOGLU H.  
II. Ulusal Hayvan Besleme Kongresi, Konya, Turkey, 18 - 21 September 2003, pp.393-396
- XXXVII. **Bakteriyal inokulantların küçük plastik balya mısır silajlarının fermentasyon özellikleri ve besleme değerleri üzerindeki etkileri**  
FİLYA İ., SUCU E., HANOGLU H.  
II. Ulusal Hayvan Besleme Kongresi, Konya, Turkey, 18 - 20 September 2003, pp.230-233
- XXXVIII. **Türkiye de silo yemleri üretimi ve kullanımı üzerine bir araştırma**  
FİLYA İ., SUCU E.  
III. Ulusal Zootekni Bilim Kongresi, Ankara, Turkey, 14 - 16 October 2002, pp.136
- XXXIX. **The effect of Lactobacillus plantarum and Lactobacillus buchneri on the fermentation aerobic stability and ruminal degradability of maize silage in warm climate**  
FİLYA İ., KARABULUT A., SUCU E.  
The XIIIth International Silage Conference, SCOTLAND, 11 - 13 September 2002, pp.192-193
- XL. **Ensiling maize with biological additives in large containers for ruminants**  
FİLYA İ., HANOGLU H., SUCU E., KARABULUT A.  
The XIIIth International Silage Conference, SCOTLAND, United Kingdom, 11 - 13 September 2002, pp.194-195
- XLI. **Effects of enzyme lactic acid bacteria mixture silage inoculants on the fermentaton aerobic stability cell wall content and in situ rumen degradability of wheat sorghum and maize silages in Turkey**  
FİLYA İ., SUCU E.  
The XIIIth International Silage Conference, SCOTLAND, United Kingdom, 11 - 13 September 2002, pp.200-201
- XLII. **The effects of cultivar and stage of maturity on yield fermentation aerobic stability cell wall content and in situ rumen degradability of whole crop wheat silage**  
FİLYA İ., DOĞAN R., KARABULUT A., KALKAN H., SUCU E.  
Turkey- Israel Workshop on Silage and Agricultural By-Products for High Lactating Cows, BET DAGAN, 24 - 26 July 2001, pp.18-21

## Supported Projects

ŞAHİN S., TÜLEK E., SUCU E., YILMAZ ERSAN L., KARKAR B., Project Supported by Higher Education Institutions, BAZI



PROBİYOTİK BAKTERİLERİN KEÇİBOYNUZU UNU İLE ENKAPSÜLASYONU VE HAYVAN BESLEMEDE YEM KATKI MADDESİ OLARAK KULLANIMININ ARAŞTIRILMASI, 2023 - Continues

Sucu E., TÜBİTAK - AB COST Project, The SeaWheat COST Action (CA 20106 - TOMORROW'S 'WHEAT OF THE SEA': ULVA, A MODEL FOR AN INNOVATIVE MARICULTURE), 2021 - 2026

Sucu E., Project Supported by Higher Education Institutions, Şerbetçi Otuunun Farklı Bitkilerle Yapılan Silajlarının Kalitesinin Belirlenmesi, 2021 - 2023

Sucu E., Canbolat Ö., Öziş Altınçekiç Ş., Ak İ., Project Supported by Higher Education Institutions, Bursa Uludag University Faculty of Agriculture Department of Animal Science Development of Research and Application Opportunities , 2019 - 2020

Sucu E., Güneş N., Udum D., Canbolat Ö., Project Supported by Higher Education Institutions, The Effect of Use of Microalgae Oil on Immune System, Intestinal Health, Bioenergetic Metabolism and Fattening Performance in Sheep , 2013 - 2017

Sucu E., Dokuzlu S., Ak İ., Industrial Thesis Project, Determination of Feed Value and Possibilities of Use in Animal Nutrition of Seedless Dry Olive Paste Obtained from Different Production Systems , 2014 - 2015

SUCU E., Other International Funding Programs, Determining the effectiveness of proteases on production variables in lactating Holstein cows, 2011 - 2012

SUCU E., Other International Funding Programs, The Effects of Supplemental Zinc Amino Acid Complex on Production, Metabolism and Aspects of Hoof Health in Lactating Dairy Cows, 2010 - 2012

Sucu E., Filya İ., Project Supported by Higher Education Institutions, Effects of Lactic Acid Bacteria Inoculants on Fermentation and Aerobic Stability Properties and Rumen Ecology of Corn Silage , 2006 - 2010

Sucu E., Canbolat Ö., Filya İ., Project Supported by Higher Education Institutions, Comparison of In vitro Gas Production, Metabolizable Energy, Organic Matter Digestibility and Microbial Protein Production of Some Legume Hays , 2002 - 2007

Sucu E., Filya İ., Project Supported by Higher Education Institutions, Effects of Lactic Acid Bacterial Inoculants on Fermentation Aerobic Stability and In Situ Rumen Degradability Properties of Corn Sorghum and Wheat Silages , 2002 - 2004

## Activities in Scientific Journals

Macedonian Journal of Animal Science, Committee Member, 2018 - Continues

Journal of Agricultural Faculty of Bursa Uludag University, Committee Member, 2016 - Continues

## Memberships / Tasks in Scientific Organizations

American Society of Animal Science, Member, 2010 - Continues, United States Of America

## Scientific Refereeing

KOSGEB, NEDİMLER ZİRAAT ALETLERİ VE TARIMSAL ÜRÜNLER SANAYİ TİCARET LİMİTED ŞİRKETİ, Turkey, May 2021

KOSGEB, MANAV YEM VE UNSAN TİC AŞ, Turkey, April 2021

Project Supported by Higher Education Institutions, BAP Research Project, Ege University, Turkey, October 2020

Project Supported by Public Organizations in Other Countries, National Science Center Poland, Poland, March 2020

## Metrics

Publication: 81

Citation (WoS): 344

Citation (Scopus): 385

H-Index (WoS): 10

H-Index (Scopus): 10

## **Scholarships**

The Council of Higher Education -Postdoctoral Fellowship , YOK, 2010 - 2012

## **Non Academic Experience**

Iowa State Universitesi/ABD